



Ground Hard plate

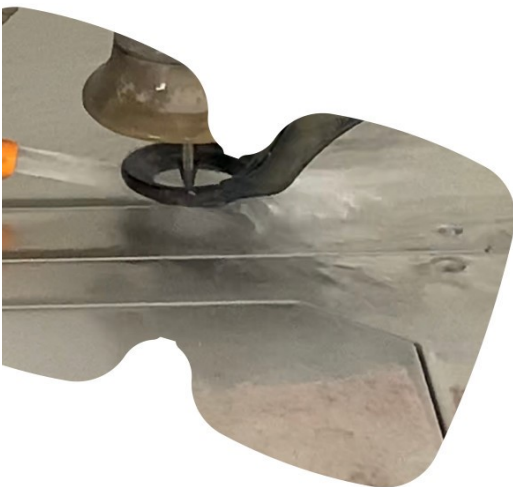


Hard Ground Plate

Sharples stocks 1/8" and 1/16" Hard Plates inhouse for our customer's convenience. The hardness of this material allows for long runs. Helping to eliminate the need to change plates frequently. The flatness of the plates help to provide an even wear on the tool being used. Custom thicknesses are also available upon request. Laser and Waterjet cutting services available.

Steel Plate and 420 Stainless Steel*

- ◆ Hardness: 47-50 C Scale Rockwell
- ◆ Thickness tolerance: +/- .002"
- ◆ Flatness tolerance: <0.040:TIR
- ◆ Parallelism: <0.0011-0.0019"



Minimal heat is added in the cutting process yielding no affects to the Rockwell hardness near the striking areas on the anvils.

For those tight striking areas with large part clearance; Abrasive Waterjet cutting can be utilized which will add NO heat to anvil plates.



*420 stainless is also a ground flat plate. This Stainless steel is a Martenistic Chromium Stainless Steel. It contains Carbon; we advise that although it is corrosion resistant, the plate like all plates should be wiped down after use before storage. Rust could occur.